

External ProjectWise V8i SS3 Install Manual
for
Subconsultants & Team Members

submitted to
Baker Subconsultants & Team Members

submitted by
Michael Baker Jr., Inc.
ProjectWise Support Team

The Baker logo consists of the word "Baker" in a white, sans-serif font, centered within a solid blue rectangular background.

December 20, 2011

Table of Contents

Installing ProjectWise	3
Prior to Installation	3
Installation	3
Baker Datasource Setup.....	8
Baker Project Datasources.....	11
Baker ProjectWise Support	11

Installing ProjectWise

Installation of ProjectWise for Non-Baker ProjectWise Users

If you are not an administrator on your computer or do not feel comfortable installing this software, please contact your local computer support staff for assistance with this installation. This document assumes you are using Microsoft Windows XP or 7.

Prior to Installation

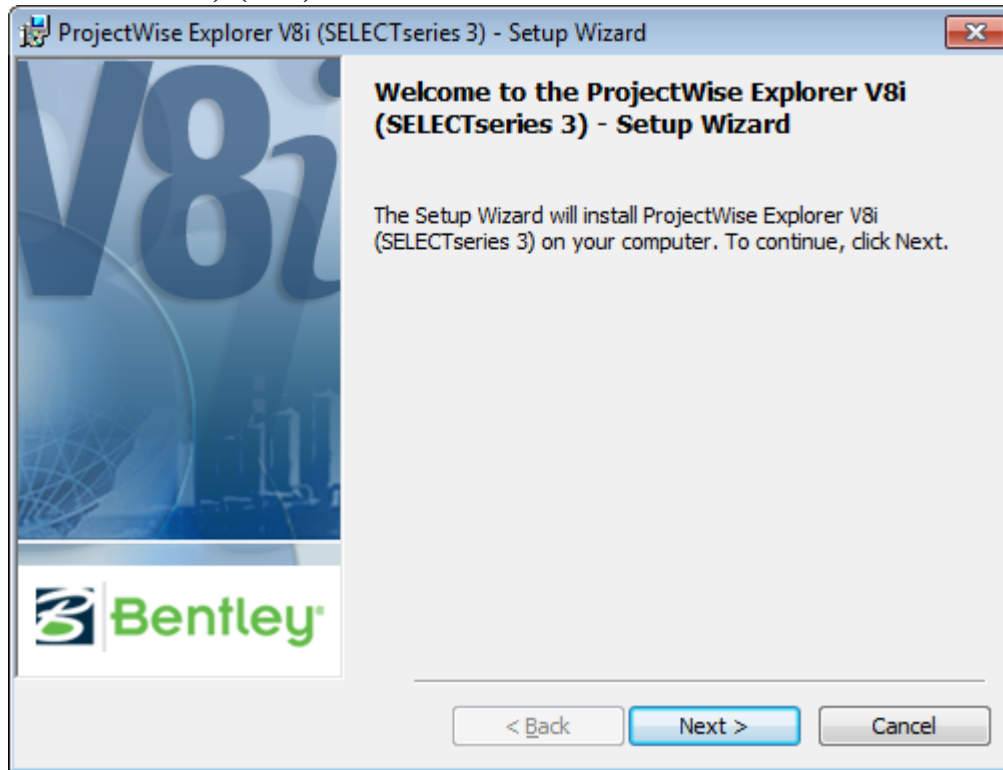
Make sure you do the following prior to installing ProjectWise.

1. If you have another version of ProjectWise on your computer and need it for non-Baker use, you will need to install ProjectWise V8i to a folder other than the default. A suggestion would be to install to a ProjectWiseV8i folder when prompted during the installation. If you no longer require the use of other versions, uninstall the other versions prior to installing ProjectWise V8i.
2. The ProjectWise Version Switch may be needed if you are using several versions of ProjectWise. In ProjectWise V8i, search for “Version Switch” in the Help file. It will instruct you on how to switch between versions.
3. Install all Office, Autodesk and Bentley software applications.
4. Save and close all software applications.

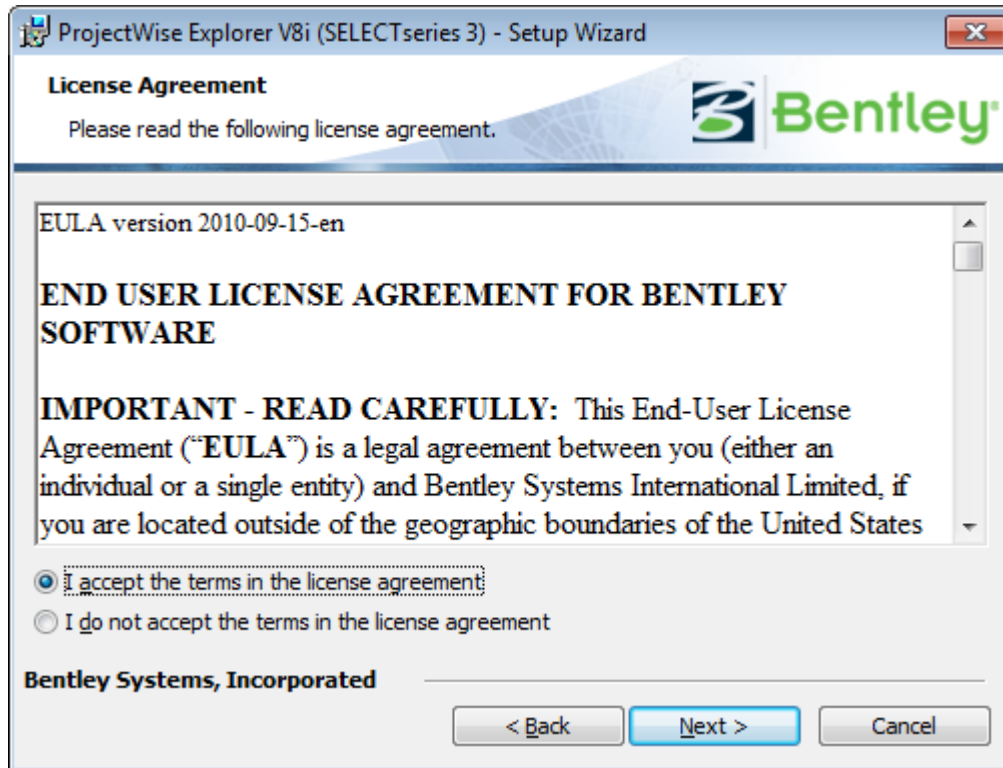
Installation

Unzip the Baker_ProjectWise_ExplorerV8i(SS3)(x86).zip or Baker_ProjectWise_ExplorerV8i(SS3)(x64).zip file that you downloaded to your local computer or network location. (Version 08.11.09.122)

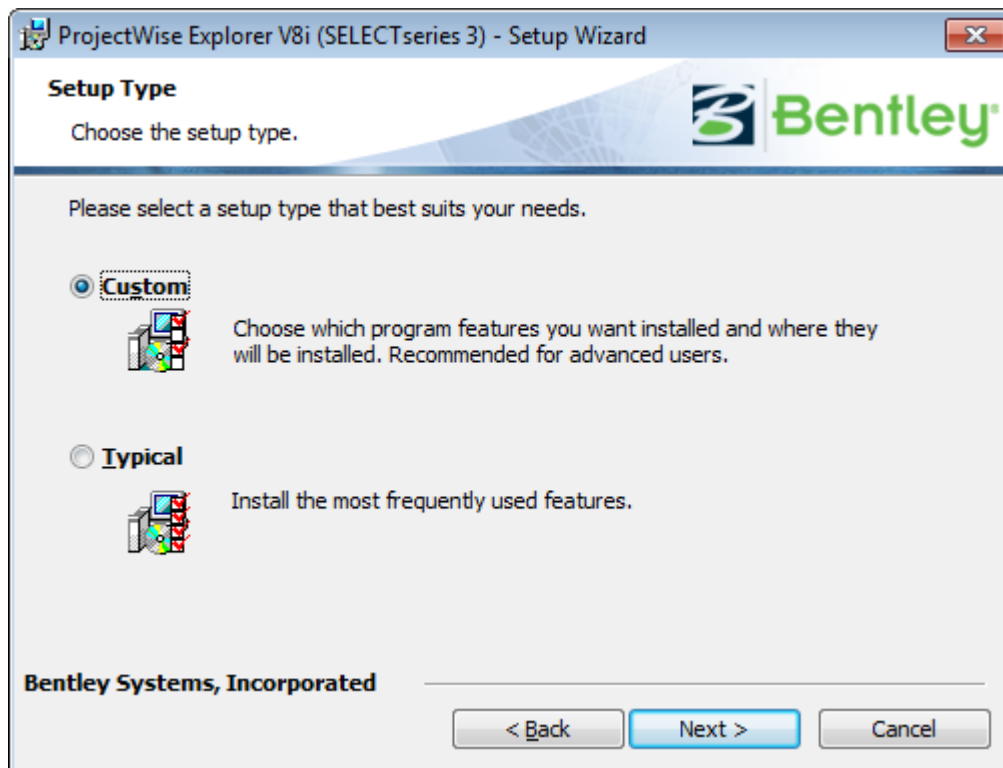
Browse to that folder and double click the **ProjectWise Explorer V8i (SELECTseries 3) (x86).msi** or **ProjectWise Explorer V8i (SELECTseries 3) (x64).msi** file to start the install.



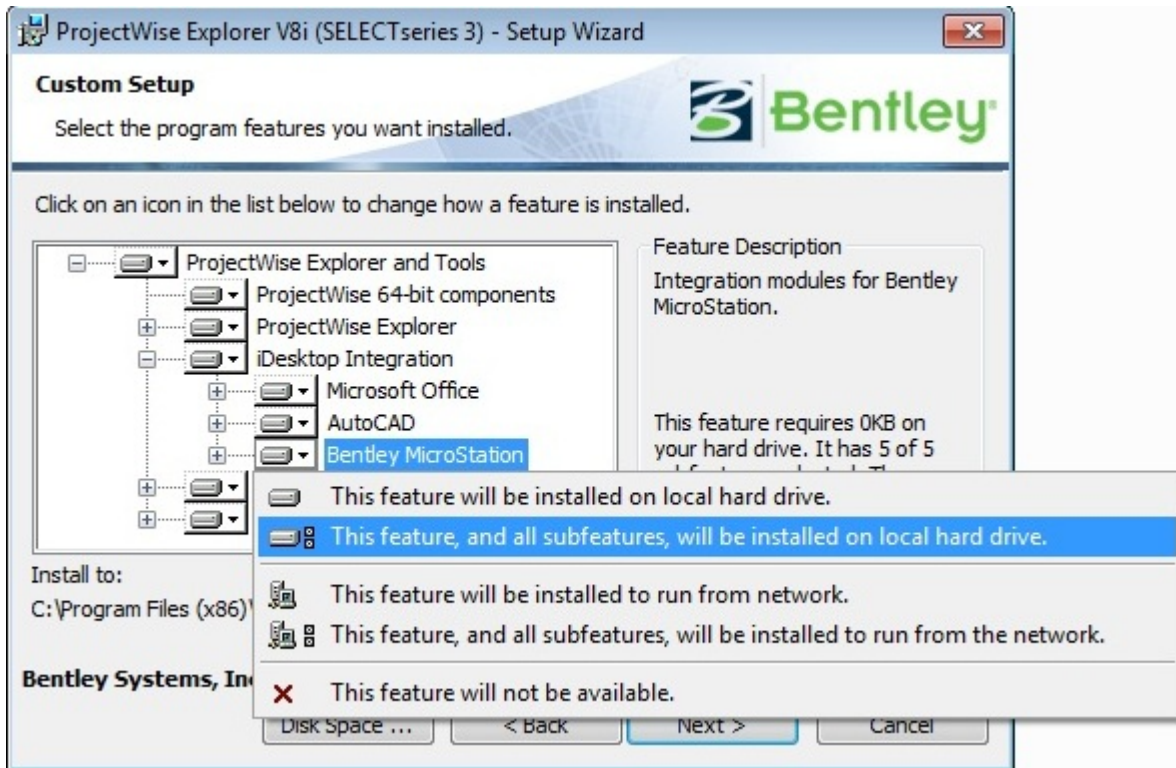
Click Next to continue.



Accept the license agreement and Click Next.



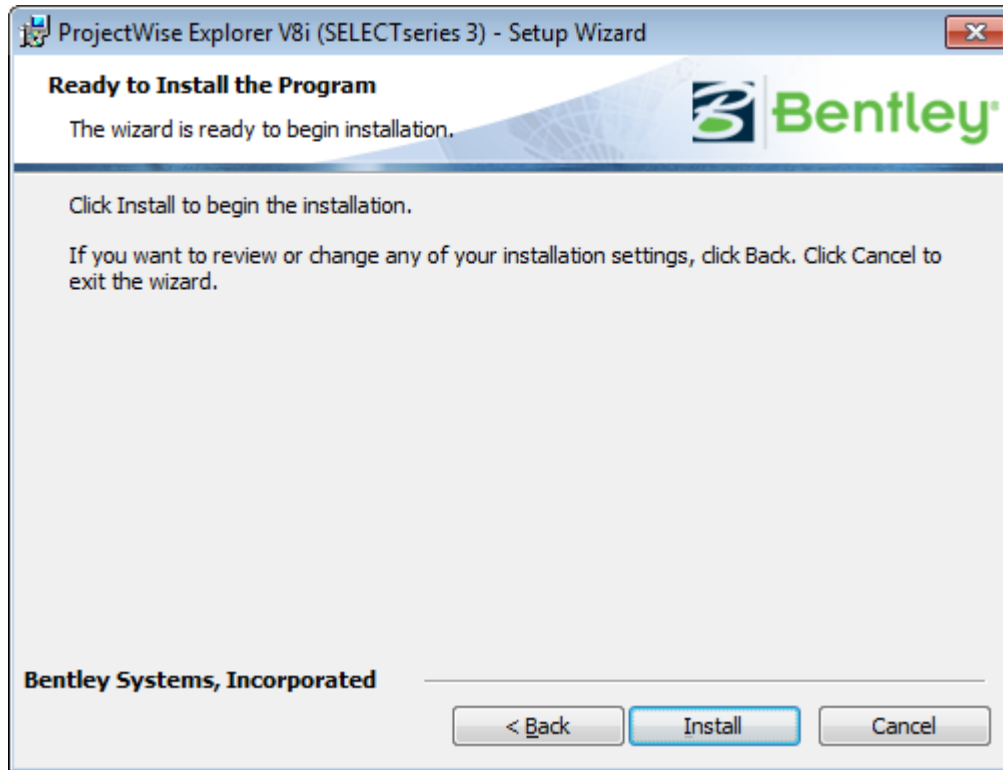
Select the Custom radio button and Click Next.



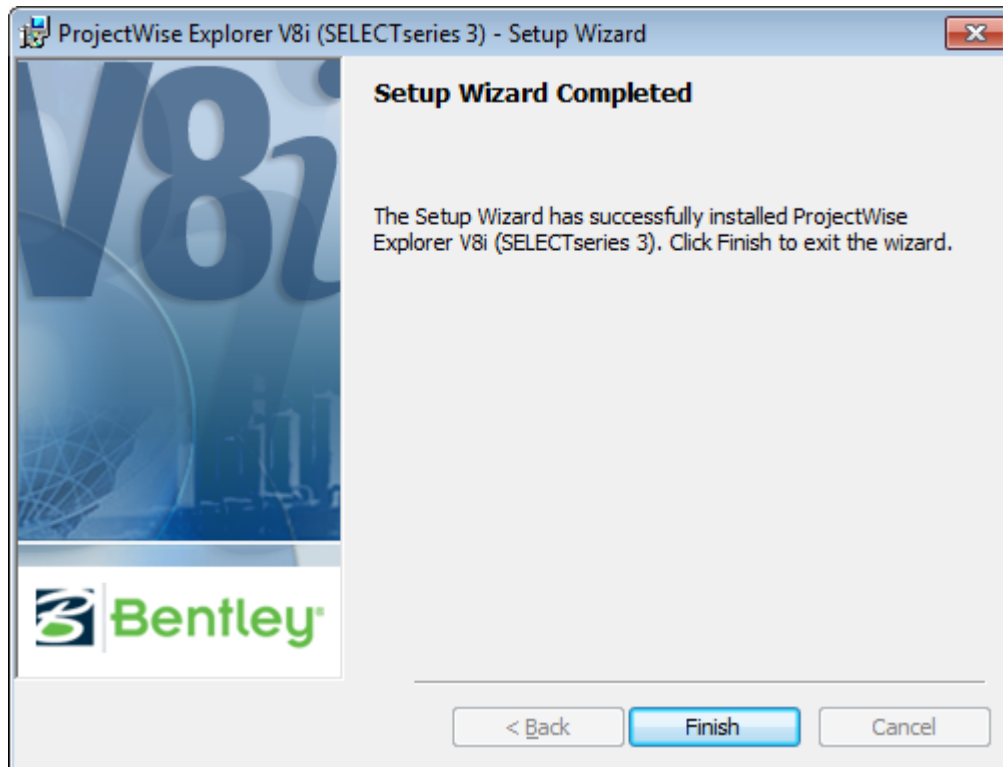
If you would like to integrate your CAD software with ProjectWise you can select the highlighted option to install the feature on your local hard drive. It is not required to integrate the program with ProjectWise, but if you are working exclusively on a ProjectWise project it is recommended.

Note: It is recommended that you integrate all programs available during the installation install, this option can be reversed later if you do not like the program being integrated with ProjectWise. You will need to go to Add or Remove Programs or Programs and Features in Control Panel, highlight ProjectWise and choose Change, Next then Modify. That will bring you back to the install wizard above and you can choose “This feature will not be available” for the program that you would like to un-integrate.

Once you choose the programs you would like to integrate or not Click Next.



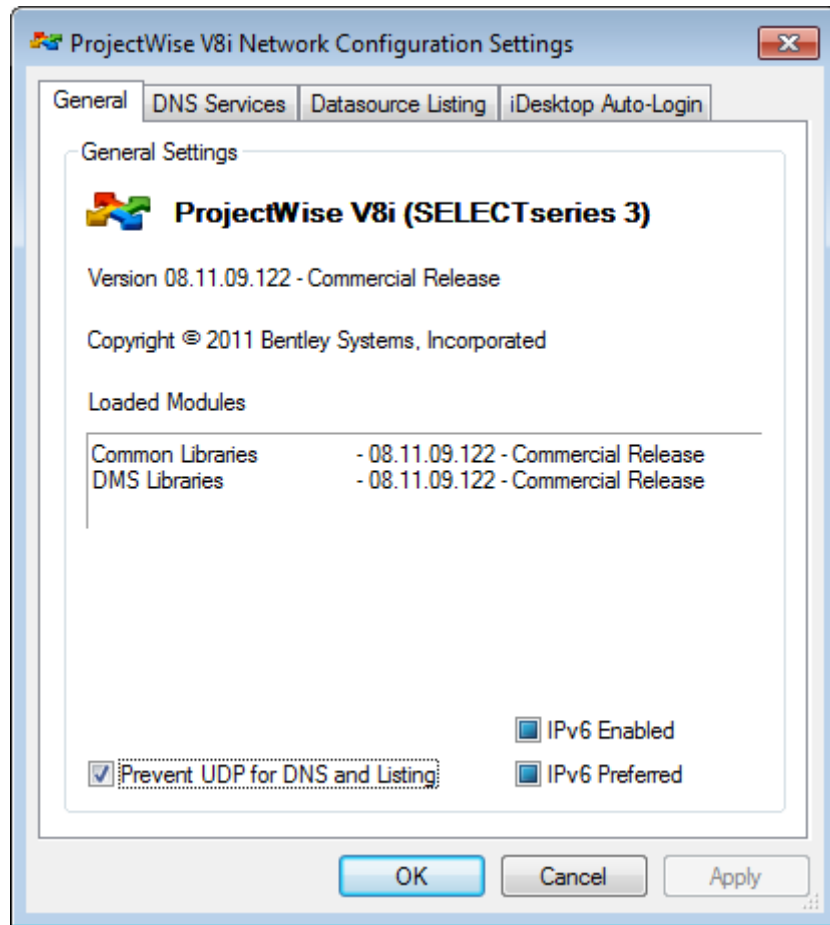
Click Install.



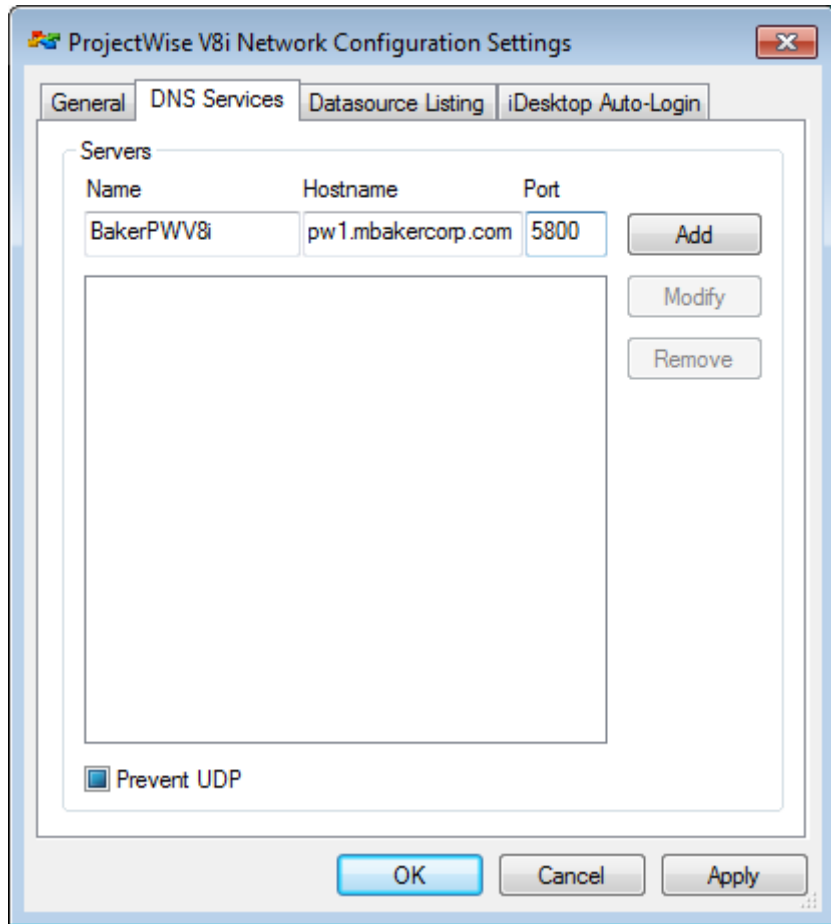
Click Finish and **reboot** your computer.

Baker Datasource Setup

After reboot - Go to Control Panel and open ProjectWise V8i Network.



Click on the DNS Services tab.



Enter

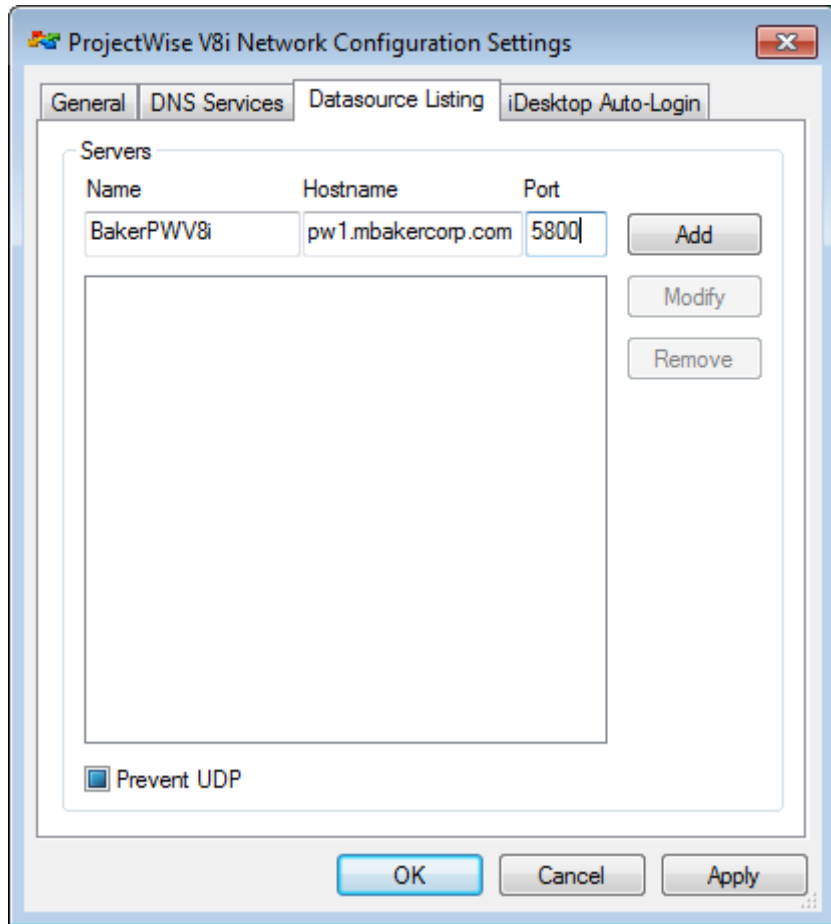
Name: **BakerPWV8i**

Hostname: **pw1.mbakercorp.com**

Port: **5800**

Click Add and Apply

Switch to the Datasource Listing Tab.



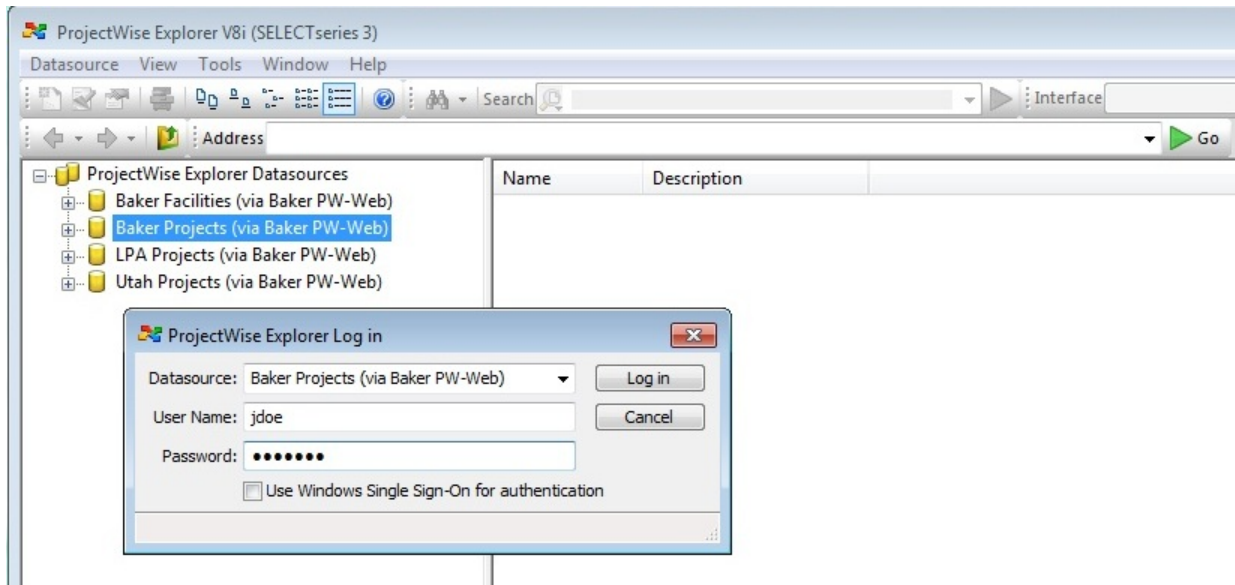
Enter
Name: **BakerPWV8i**
Hostname: **pw1.mbakercorp.com**
Port: **5800**
Click Add, Apply and OK

Note: If you have a firewall, you may need to allow **pw1.mbakercorp.com** through port 5800.

Baker Project Datasources

Open ProjectWise Explorer

Start>All Programs>Bentley>ProjectWise V8i (SELECTseries 3)>ProjectWise Explorer



Click on the datasource you are working in and enter the user name and password you received from Baker.

ProjectWise will prompt you to create a working directory. (Example: C:\pww8i-local\baker_projects\username\) Click yes to create this directory. This will be the local working directory used by ProjectWise. **Do not open files directly from this directory or delete files from this directory.** Use the Local Document Organizer inside of ProjectWise Explorer to manage the local working directory.

Baker ProjectWise Support

Need Help?

Please contact Baker Digital Services Help Desk at 1-866-447-6333 or email pwsupport@mbakercorp.com