

Brookland Transportation and Streetscape Study

Introduction

The District Department of Transportation, along with a consulting team from David Volkert & Assoc. Eng., P.C. and Michael Baker Jr., Inc., is embarking on a study of the Brookland Area. The Brookland Transportation and Streetscape Study will focus on comprehensive transportation and streetscape design to enhance safety and strengthen economic development and vitality of the community.

Study Corridors

- Michigan Avenue from North Capitol Street to Eastern Avenue.
- Monroe Street from Michigan Avenue to South Dakota Avenue, N.E.
- 12th Street, N.E. from Michigan Avenue to Rhode Island Avenue – Primary Streetscape Corridor

Elements of the Study

- Transportation analyses of existing and future conditions based on current travel patterns and future travel, land use and demographic projections as identified by the Metropolitan Washington Council of Governments for 2025.
- Analysis of the existing and development of enhanced streetscape elements along the 12th Street corridor and along the Monroe Street corridor between 12th Street and the Brookland Metro Station.
- A series of Study Advisory Committee (SAC), ANC and community inputs in every phase of the Study.
- A series of Public Meetings, Community Walk, 2 Community Workshops (Completed in October and November 2004)
- Hand, email, radio announcements on local stations or mail distribution on meeting notices.

Current Status - Transportation Study

- Data collection for existing conditions for original 10 intersections and an additional 5 intersection completed.
- Transportation Analyses for existing conditions for 15 intersections complete.
- Existing Conditions Assessment Report scheduled for completion January, 2005 and will be posted on the ddot.dc.gov

Current Status - Streetscape Study

- Existing Streetscape element inventory completed.
- Possible Short term and Long Term Streetscape Solutions Identified.
- Existing Conditions Assessment Report scheduled for completion January, 2005 and will be posted on the ddot.dc.gov



Brockland Transportation and Streetscape Study

Please check the one you like for the sidewalk materials along 12th Street NE:

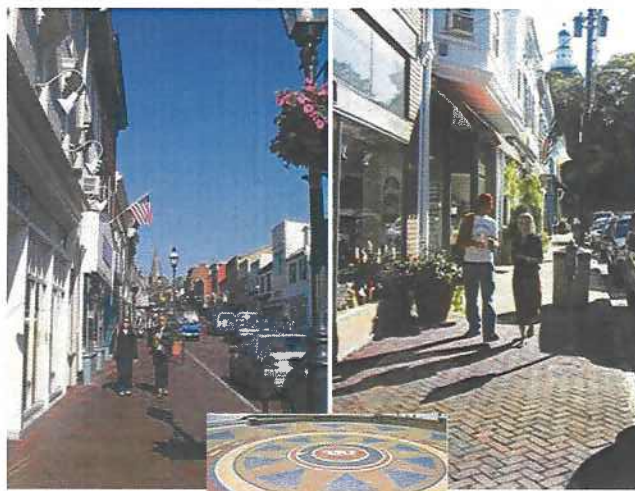
Bricks



Concrete



Combination



Paving Accent



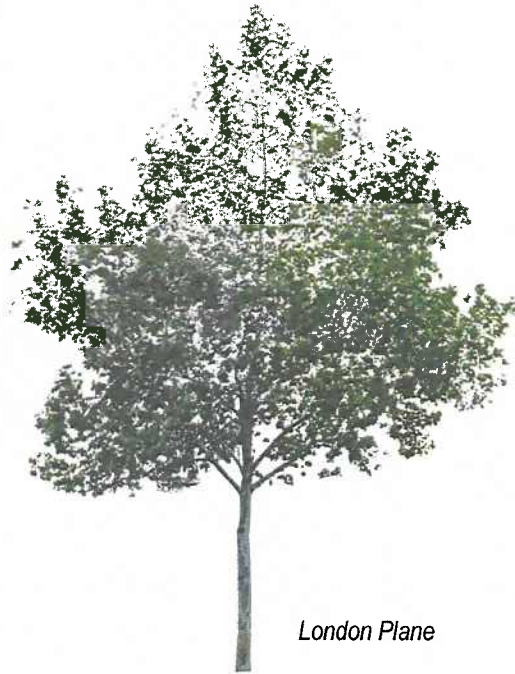
Paving Accent

Brookland Transportation and Streetscape Study

Please check the one you like for street trees along 12th Street NE:

Shade Tree

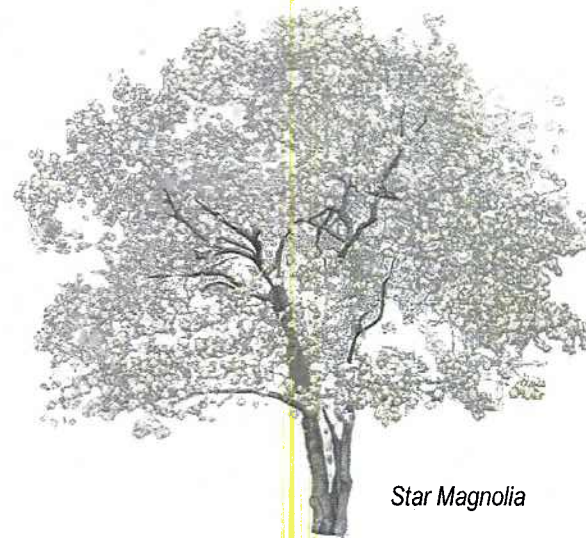
- London Plane 'Bloodgood'
- Liberty American Elm
- Princeton American Elm
- Chinese Elm
- Willow Oak
- Red Oak
- Red Maple
- Golden Raintree
- Japanese Zelkova
- Honey Locust
- Black Tupelo
- Greenspire Littleleaf Linden
- Other



London Plane

Ornamental Tree

- Star Magnolia (Tree Form)
- Crape Myrtle
- Kwansan Cherry
- Ivory Silk Japanese Tree Lilac
- Autumn Brilliance Serviceberry
- Carolina Silverbell
- Other



Star Magnolia

Street Trees

Tree Boxes/Planters

